

BROADWAY

Broadway Catford Technical Specification V2 2023



Contents:

Page:

Theatre Contacts.....	5
History.....	6
Main House.....	7
Main House Auditorium Dimensions.....	8
Main House Auditorium From Above.....	9
Main House Auditorium Side View.....	10
Main House Stage Dimensions.....	11
Main Stage Above.....	12
Main Stage Flying.....	13
Main Stage Flying Grid Plot.....	14
Main Stage Flying Standard Layout.....	15

Main House Flying Standard Layout cont.....	16
Main House Get in info.....	17
Main House Get in Map.....	18
Main House Stage Equipment.....	19
Main House Orchestra Pit.....	20
Main House Control Positions.....	21
Main House Auditorium Rigging.....	22
Main House Dressing Rooms.....	23
Main House Lighting.....	24
Main House Lighting.....	25
Main House Lighting.....	26
Main House Lighting.....	27
Main House Lighting.....	28
Main House Lighting.....	29
Main House Lighting.....	30

Main House Lighting Plan FOH.....31

Main House Lighting Plan Stage.....32

Main House Sound Equipment.....33

Main House Sound Equipment.....34

Main House Sound Equipment.....35

Main House Sound Equipment..... 36

Main House Audio Visual Equipment.....37

Studio Theatre..... 38

Studio Theatre Stage.....39

Studio Theatre Stage Dimensions40

Studio Theatre Control Room / Dressing Rooms.....41

Studio Theatre Lighting.....42

Studio Theatre Lighting cont. / Sound.....43

Studio Theatre Lighting Plan.....44

Studio Theatre Picture.....45

Theatre Contacts:

Theatre Operations Manager - Carmel O'Connor carmel@broadwaytheatre.org.uk 0208 314 9472

Sub Contract Technical Manager – Lee Waddington info@soundchoicehire.co.uk 01277260355 / 07501729486

Theatre Address:

The Broadway Theatre

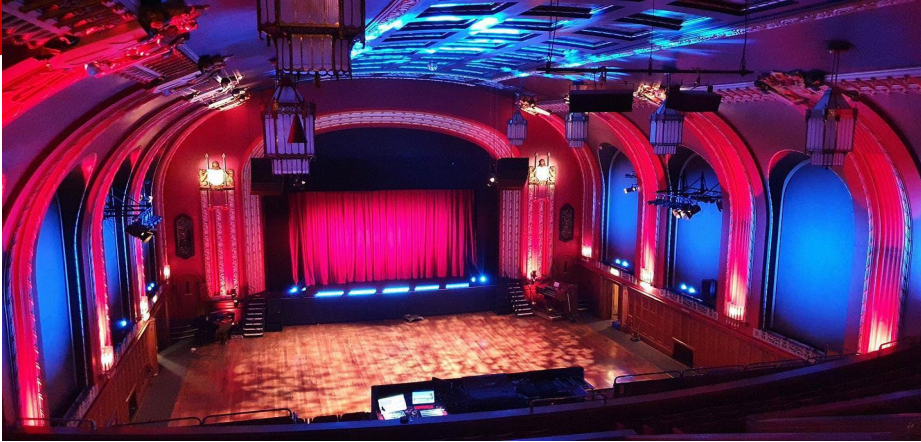
Catford Road

London

SE6 4RU

Google Maps Link <https://goo.gl/maps/SJzVk3Rkv6PneAZE8>

BROADWAY



History

A grade II* listed building, the theatre was built in 1932 and is an example of Art Deco design. The architects were Bradshaw Gass & Hope; the slightly Gothic features were intended to relate to the adjacent Gothic Revival Town Hall which has since been demolished.

It has two auditoriums, an 772-seat main theatre and a small 90-seat studio theatre. Its programme consists of a diverse mix of theatre and music, including a pantomime season featuring star names, stand up comedy, nostalgia shows, drama and children's theatre.

The Theatre started out as a concert hall and was built on top of a disused fire station. It was built as an extension to the Town Hall next door and the architecture was to match it. The new concert hall was officially opened on June 22nd 1932 by the Duke of York.

During the 2nd World War the building was used as a ration station, telephone exchange and an air raid shelter.

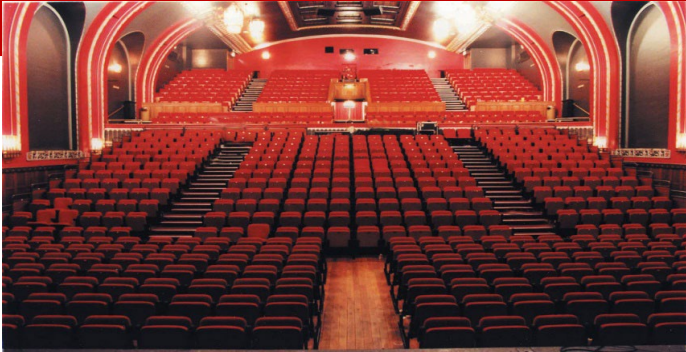
In 1965 the building was officially named Lewisham Concert Hall and performers from all over the UK and US came to put on shows here.

In the 1980's the concert hall was renamed and rebranded as The Lewisham Theatre and the interior was refurbished with new technology and layout. The old hall was refurbished with cabaret style seating and the ability to seat around 120. The new main auditorium became famous for its comedy performances.

In 2001 the theatre had its latest name change and became the Broadway Theatre.

The theatre is entering a new era with a vast refurbishment during 2022 which will see improvements to audience facilities and backstage facilities.

BROADWAY



Main House

Auditorium Capacity Standard Seating Layout: 772 Total - Front Stalls 6 rows : 142 - Raised Stalls: 271 - Circle: 359

The Front and Raised Stalls can be removed entirely to facilitate standing concerts or partially allow additional room for orchestra pit, stage extensions or activity in front of the stage. A seat movement fee is charged for this configuration depending on how many rows are being removed.

The following number of seats shall be lost for the following

Front of stage Orchestra Pit - Rows B - C 41 Seats

Full Orchestra Layout Rows B – G 142 Seats

The Theatre retains 6 house seats and 6 wheelchair spaces

Incoming Control Equipment

For touring sound desk's the centre of the back of the Raised Stalls 3 seats can be taken out - these are house seats not included within capacities max size of sound desk 1.5m wide x 1.2m deep.

Disabled Access:

The Broadway is a flat floor venue with balcony of permanently installed theatre style seating. Unfortunately the circle is not available to wheel chair users , but there is wheelchair access via the main bar to the stalls.

6 Wheelchair Spaces are available within the stalls

Main House Auditorium Dimensions

Auditorium width wall to wall 17260mm

Front of stage to control position 16410mm

Front of stage to advance bar 3030mm - Advance Bar Width 8850mm / weight loading

600kg overall / point loading 150kg between chords / travel 10.5m

Front of stage to speaker delay bar 21160mm - Delay Bar Width 5000mm / weight

loading 300kg overall / point loading 50kg between chords / travel 6m

Front of stage to rear auditorium wall 31730mm

Front of stage to front lighting bridge 7790mm

Front of stage to rear lighting bridge 10880mm

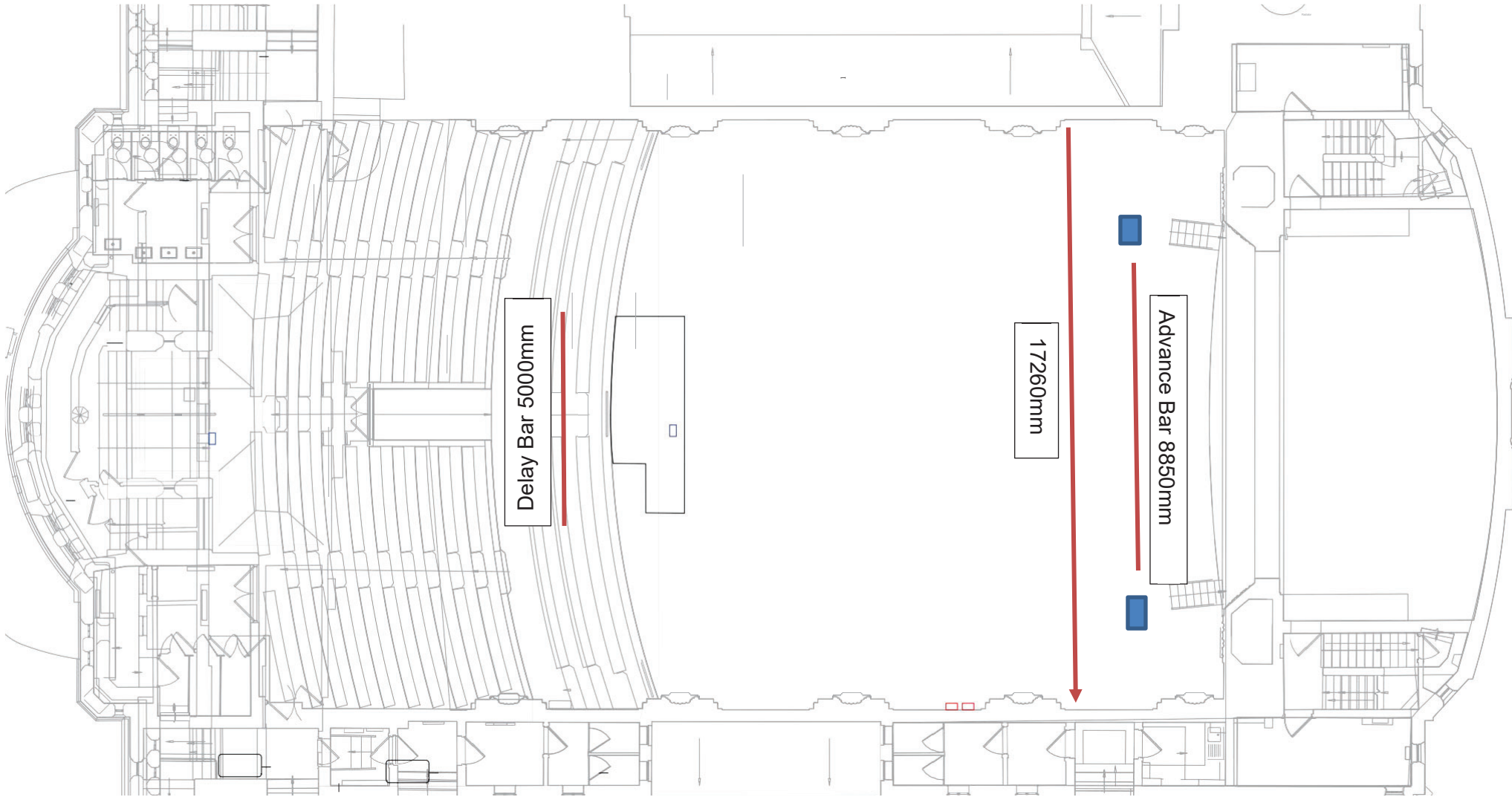
Auditorium Height (highest point) 11740mm

Front of stage to first row of seats (widest point) 2760mm

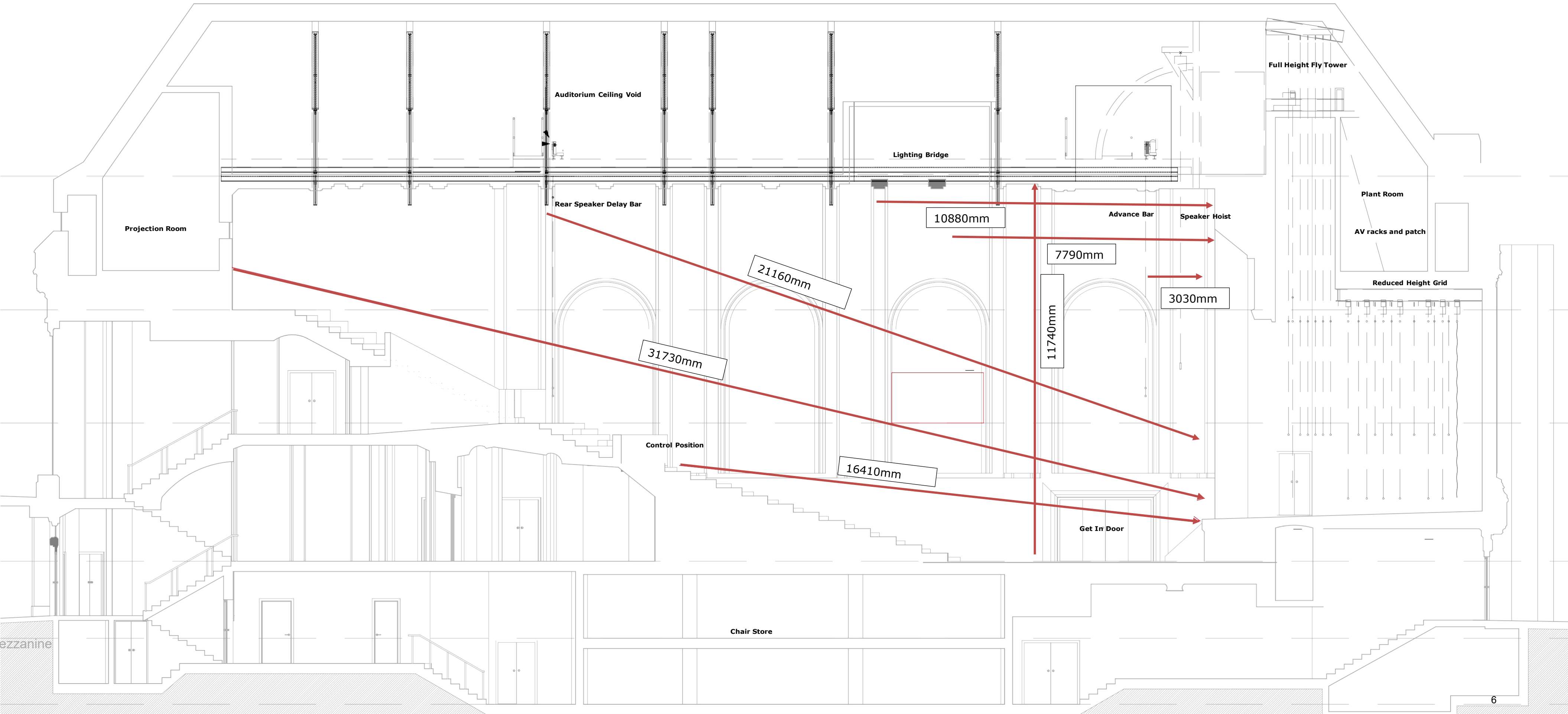
Front of stage to Bleachers (flat floor set up orchestra layout) 7840mm

Front of stage to Bleachers retracted 15360mm

Main Auditorium from above



Main House Auditorium Side View



Main House Stage Dimensions:

Proscenium width wall to wall : 9969mm

Proscenium Height – 6203mm

Proscenium width with tabs used as masking :

Depth of apron at centerline 2240mm (To deepest point at centre) Total Depth from front to back wall 8511mm

Total Depth from Tabs – setting line to centre of back wall 6041mm Total Depth from Tabs – setting line to end of curved back wall 5601mm

Height to underside of downstage grid – 13839mm

Maximum out dead of hemp bars in downstage grid – 13500mm

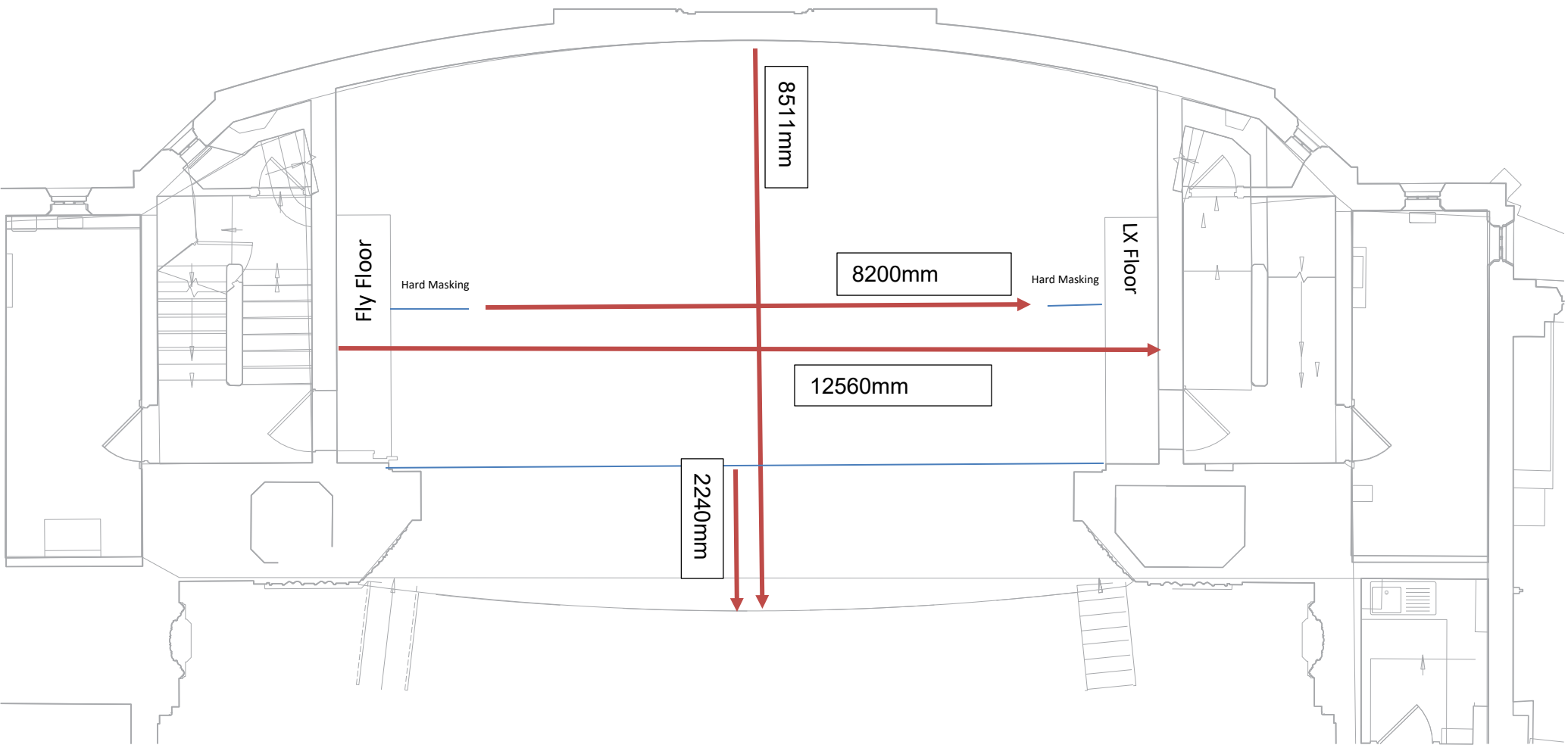
Height to underside of upstage grid – 6590mm

Maximum out dead (height to underside of lowest bars) – 6000mm Total width of stage from wall to wall 12560mm

Width of stage from hard masking flat to hard masking flat -

Please note wing space is very limited and on stage right there is a perch for the fly floor approx 2400mm from floor level extending nearly full length of wing and stage left the LX perch is approx 4.5m from floor level and again extending nearly full length of wing , wing depth each side is approx 800mm from hard masking flats

Riser



BROADWAY

Main House Flying :

There are 12 hemp bars in the main house , the grid is spread across two heights. The downstage part of the grid is the full height of the venue 13839mm and has hemp bars 1 – 6 in it , please note these can be used for live flying but require a two person operation and have a weight loading of 50kg max and a safe live flying weight of 25kg as are single purchase and only suitable for front clothes / gauzes.

The second part of the grid is a lot lower , and therefore only cloths on swipe tracks can be used effectively for scene changes here.

The height to the underside of the bars here is 6000mm , Hemp bars 7 – 12 are located in this area , again weight loading is a max of 50kg so suitable for borders / legs and headers only.

In addition to the hemp bars are 8 ETC Prodigy motorised bars with an overall weight loading of 250kg with 100kg point loading , these are mainly used as LX bars or for swipe track rigging.

All bars are 8850mm in width with 300mm pull out bar extensions each end making a maximum width of 9450mm for each hemp / motorized bar.

Standard Layout

20	FULL BLACK - MOTORISED 8	260
19	HEMP BAR 12 - BORDER	190
18	MOTORISED 7 - LX 5	260
17	HEMP BAR 11 - SOFT LEGS	190
16	MOTORISED 6 - LX 4	445
15	HEMP BAR 10	445
14	MOTORISED 5 - LX 3	160
13	HEMP BAR 9	260
12	MOTORISED 4	260
11	HEMP BAR 8 - BORDER	260
10	MOTORISED 3	260
9	HEMP BAR 7	325
8	MOTORISED 2 - LX 2	550
Grid Height Change		
7	HEMP BAR 6 - DEEP 1.2M BORDER	200
6	HEMP BAR 5	200
5	HEMP BAR 4	200
4	HEMP BAR 3	200
3	HEMP BAR 2	240
2	MOTORISED 1 - LX 1	265
1	HEMP BAR 1	160
	HOUSE CURTAIN	150
	HOUSE BORDER - FIXED BAR	50

SOFT LEGS

SOFT LEGS

HARD MASKING

HARD MASKING

HARD MASKING

HARD MASKING

Grid Height Change

Grid Height Change

8850

300

Main House Flying Standard Layout From Downstage

Full Height Grid

House Border – Fixed bar behind Pros Arch

House Tabs – Fixed Bar with tab track

1 – Hemp Bar 1 – (runs very close to Motor 1 if Motor 1 used as a LX Bar) - **Max 50kg Max 25kg For Live Flying**

2 – Motorised 1 - LX1 - **Max 250kg Overall**

3 – Hemp 2 - (runs very close to Motor 1 if Motor 1 used as a LX Bar) - **Max 50kg Max 25kg For Live Flying**

4 – Hemp 3 - **Max 50kg Max 25kg For Live Flying**

5 - Hemp 4 - **Max 50kg Max 25kg For Live Flying**

6 – Hemp 5 - **Max 50kg Max 25kg For Live Flying**

7 – Hemp 6 – Has as standard a deep border rigged 1.2m to mark upstage portion of lower grid - **Max 50kg Max 25kg For Live Flying**

This area is suitable for **9.45m** wide cloths **6m** deep with house border in place , any cloths wider than this we would have to make up bar extensions to allow a maximum of a **10m** cloth to be rigged

Main House Flying Standard Layout From Downstage

Reduced Height Grid

- 8 – Motorised 2 – LX2 - **Max 250kg Overall max out dead 6000mm**
- 9 – Hemp Bar 7 – **Max 50kg max out dead 6000mm**
- 10 – Motorised 3 – Empty - **Max 250kg Overall max out dead 6000mm**
- 11 – Hemp Bar 8 – Border - **Max 50kg max out dead 6000mm**
- 12 – Motorised 4 – Empty - **Max 250kg Overall max out dead 6000mm**
- 13 – Hemp Bar 9 – Empty - **Max 50kg max out dead 6000mm**
- 14 – Motorised 5 – LX3 - **Max 250kg Overall max out dead 6000mm**
- 15 – Hemp Bar 10 – Empty - **Max 50kg max out dead 6000mm**
- 16 – Motorised 6 - LX4 - **Max 250kg Overall max out dead 6000mm**
- 17 - Hemp Bar 11 – Soft Legs - **Max 50kg max out dead 6000mm**
- 18 - Motorised 7 - LX5 - **Max 250kg Overall max out dead 6000mm**
- 19 – Hemp Bar 12 – Border - **Max 50kg max out dead 6000mm**
- 20 – Motorised 8 – Full Blacks on swipe track - **Max 250kg Overall max out dead 6000mm**

Main House Stage Get In Info:

The stage has a slight rake, incline to be sought for details.

The get in/out access is via the double doors to the right of the stage door size of door opening is 2070mm High x 1152mm wide

Approx 2m from the doors in is stairs access for small items to auditorium level - Steps 3358mm to auditorium level

Number of Steps 11

There is an adjustable get in ramp available to ferry flight cases up the stairs with a winch to enable motorized moving of flight cases up to a load of 250kg – please bear in mind this is a slow process so allow time for a get in. Then approximately 2M after the steps there is a set of double doors to the left leading directly into the main auditorium - Auditorium doors 3000mm wide x 2000mm high

Everything then needs to be lifted 1340mm up onto the stage.

Flats over 6000mm tall and 1220mm wide won't fit around the corner to get in and out of the venue.

All vehicles accessing the Broadway at the side of the theatre will get a ticket unless registered with the theatres operations manager, there is a camera which records all number plates as you access the pedestrianised area please email carmel@broadwaytheatre.org.uk for more details.

Trucks will have to stop in the pedestrianised area of the street for unloading and reloading. There is NO PARKING for large vehicles. Please speak to the local authority for parking permits for your trucks. The theatre cannot deal with this, you have to go direct.

There is a small ramp for one van space next to the get in doors.

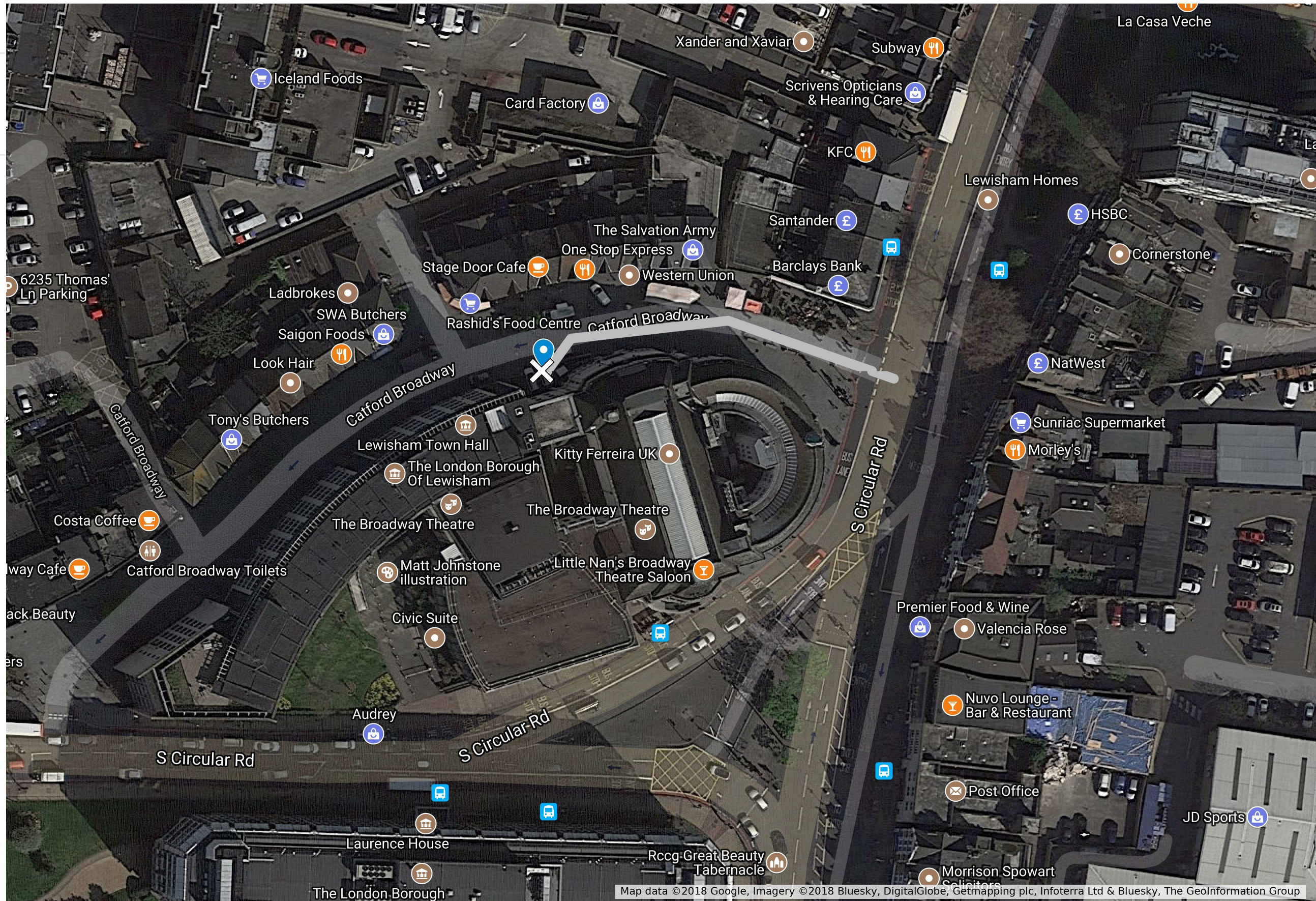
BROADWAY SE64RU

Untitled layer

Untitled layer

- Line 1
- PARKING

follow white line for parking to get in door



Main House Stage Equipment :

1 x Genie vertical personnel lift (PAV Licence holders only)

1 x 12 Rung Zarge Ladders

1 x Pairs of Black Wool Serge stage legs (7500mm deep x 1200mm wide)

1 x Black Wool Serge borders with chain weighted bottom

1 x Pair of Red Velvet tabs on fixed track mounted behind pros and operated from manual rope pull system

1 x Pair of Full Blacks on tab track furthest bar upstage joined in middle 5750mm height x 9500mm drawn

12 x Stage Weights (Standard 12kg square and bigger 18kg square weights

10 x Stage Braces

Small selection of conduit and joiners for cloths

Various hard masking in use to create wing space – wings each side are approx. 800mm deep

A set of red house tabs are classed as the setting line and a set of black tabs are installed on the furthest bar upstage on a swipe track to allow either the white cyc or black tabs to be able to be played to , I would recommend for music based hires that the black tabs are used to provide acoustic dampening of the stage.

A starcloth has recently been added to the furthest upstage motor bar which is now serving as the main backdrop for most performances.

The cyclorama is the stages back wall painted in Matt white paint and has a curve to it , this is recommended being used for dance

The base of the cyclorama has a small black ground-row that runs across to make it look neater

BROADWAY

Main House Orchestra Pit :

The first three rows of the auditorium are taken out to create space to put an orchestra. They are on the flat floor of the auditorium.

A surround is then put in to neaten up cabling and seating.

We have a small number of music stands but do not own any lit music stands , these can be brought in at an additional cost from a preferred supplier or brought in by yourselves , as long as all stands are PAT tested.

Please give a least a weeks notice if you require us to hire in lit music stands once we have produced a quote.

Sundries :

Gaffer Tape / PVC Tape and Batteries are chargeable items which shall be charged per show basis.

Litedeck can be hired in at extra charge to form drum risers etc , we keep no staging at the venue

BROADWAY

Main house Control positions:-

The Lighting and sound for the main house is currently situated centre of the bleachers at the rear of it. Accessed via a separate stair well at the back of the bleacher.

It has a purpose-built control bench 3000mm x 900mm with working / house light control and rigging control / paging plug in points

For incoming touring sound desks, the house desk shall be retained, and the toured desk placed at just off centre at the rear of the bleacher in a space normally taken up by house seats – max space for toured desks is 1.5m wide x 1.2m deep.

Please notify us of touring sound desks / lighting desks so we can book out house seats.

A hardwired Internet feed can be supplied at the control position for streaming purposes average speed is 900mps up / 900mps down.

Guest wireless Internet access is available password is **Broadway123!**

There is a single Pani 1200 follow-spot in a box at the rear of the auditorium, accessed via a stairwell used by the public.

If toured follow-spots are brought in then please contact us to discuss swapping our house one out and making sure we have sufficient power available for your fixtures – 3 x 32amp Single phase sockets are installed in the follow spot room.

Toured follow-spots cannot be put in the auditorium as we cannot take out the seats to accommodate.

Main house Auditorium rigging :-

A motorised Advance Bar is situated 3030mm from the apron edge which is a 8850mm double chorded bar with a overall weight loading of 600kg with 150kg point loading , this is normally loaded with in house lighting fixtures but has room to add additional equipment if required , max out dead is approx 10.5m , this is served by 8 dimmer ccts and 2 16 amp hot power circuits in the organ chamber , additional ccts can be added.

A motorised speaker delay bar is situated just behind control position in the circle to be mainly used as a rigging point for two flown delay speakers , again there is additional room for long throw lighting fixtures or projection equipment and can be served by a portable 6 way dimmer rack and two 32amp single phase hot power outlets are available as well , this bar is a single chorded 5000mm bar with overall weight loading of 300kg with 50kg point loading.

Two 500kg hoists support the main L + R speaker hangs - this would not normally be used for anything but the house pa but can be de-rigged in special circumstances such as for filming requirements but this would incur an extra cost.

There are two side slips either side of auditorium with 6 ccts per side , these normally remain as rigging for house equipment due to access as the bleachers have to be moved back to reach this position with the genie.

BROADWAY

Main house Dressing Rooms :-

There are 8 dressing rooms of varying capacity spread across 4 floors on either side of stage. The dressing rooms work out as follows:-

1 – 10 Occupants

2 - 9 Occupants

3 – 5 Occupants

4 – 5 Occupants

5 – 5 Occupants

6 – 5 Occupants – Accessible dressing room 4 Occupants

Wheelchair users Accessible Dressing Room: 1 occupant

Orchestra Room/Dressing Room: 19 occupants

Green Room/Dressing Room: 19 occupants

Shower room

We can facilitate additional dressing room space for performers in other areas of the venue by arrangement.

BROADWAY

Lighting :-

Touring Company Power :

We have a SES wall mounted distro unit upstage left which consists of the following :

125 amp 3 phase

63 amp 3 phase

32 amp 3 phase

63 amp single phase x 2

32 amp single phase x 2

In addition to this there is a 125 amp 3 phase supply stage right which can have a temporary distro box which consists of the following: 63amp 3 phase

32 amp 3 phase

63 amp single phase

32 amp single phase

16 amp single phase

BROADWAY

Lighting :-

Touring Company Power :

There are 18 dedicated 16 amp relay circuits (hot power) controlled via the lighting desk and all house dimmers are thru pass modules so can be switch to provide hot power at all dimmer outlets.

There is a range of either 13 amp / 16 amp / 32 amp outlets spread around the stage and auditorium roof space to provide additional hot power to the advance bar and delay bar .

The projection room has two 32 amp single phase outlets to feed the follow spots.

Lighting Control :

1 x ETC Ion 1024 channels with 1 of 2 x 10 fader wing - House desk

1 X Avolite Tiger Touch with mobile wing 8192 channels with mobile wing is available at extra cost.

Desk connection is via Sacn ethernet connection at control position to a ETC 4 universe node in the dimmer room splitting to dimmers and venue dmx outlets via 4 Swisson dmx splitters.

There are 20 dmx outs spread around the stage / auditorium / roof space which can be used to patch over 4 universes in addition to this there is another ETC 4 way node and 2 ETC single nodes available which can be freely patched to any universe.

BROADWAY

House Lights – Blues and Stage worker control :

The houselights can either be controlled at various points including the control position via ETC Echo scene controller or via the lighting desk.

The stage working lights can either be controlled at various points including the control position via ETC Echo scene controller or via the lighting desk.

The Stage blues (ETC Blues System) can either be controlled at various points including the control position via ETC Echo scene controller or via the lighting desk.

Dimmers:

There are two racks of ETC Sensor dimmers which are thru pass module versions to allow dimmed or hot power, the two racks make up a total of 120 dimmed circuits and 18 dedicated 16 amp relay (hot power) circuits.

These are located as follows:

9 Circuits per FOH bridge 4 of which are 5K circuits

6 Circuits per FOH slip + 2 Circuits per Perch position

66 Circuits on the SL LX floor of which circuits 105 – 108 are 5K dimmers

0 Circuits on SR flyfloor

12 Circuits at stage level

8 Circuits in Organ chamber to feed FOH advance bar

BROADWAY

Permanent FOH LX Rig :

Bridge one (Nearest stage): 6x Source 4 Zoom 15/30 750W

2 x Source 4 750W 19 degree

1 x Source 4 25/50 750W

Bridge one

6 x Source 4 Zoom 15/30 750W

2 x Source 4 19degree 750W

Side Slips

5 x Source 4 Junior 25/50 575W per side

4 x Robert Juliet 1200w Fresnels

Perch Positions

1x Par 64 - Tab Warmers per side

1 x Source 4 Junior 25/50 575w Shield light per side

Up and Down bars

There are two small up and down bars above the exit doors suitable for very lightweight fixtures.

Advance Bar

6 x CCT Starlette 1000w Fresnel

4 x Source 4 Juniors 25/50 575w

BROADWAY

Permanent Stage LX Rig :

LX 1:	6 x Par 64 4 x CCT Starlette 1000w Fresnel 7 x Source 4 Junior 25/50 575w
LX2:	6 x Par 64 2 x Source 4 Junior 25/50 575w 9 x CCT Starlette 1000w Fresnel
LX3:	12 X Par 64 4 x Source 4 Junior 25/50 575w 6 x CCT Starlette 1000w Fresnel
LX4:	12 x Par 64 6 x CCT Starlette 1000w Fresnel 4 x Source 4 Junior 25/50 575w
LX5:	2 x Howie Batterns

BROADWAY

Permanent Stage LX Rig :

Side Drop Booms:	4 x Fusion Zoom 150MK2
Tab Uplighters:	2 x Showtec Powerline Led Batten
USR:	1 x Smoke Factory Hazer
Upstage floor:	4 x Source 4 Junior 25/50 575w 5 x Prolight Tri Power Battens
Motor 8:	3 x 3m x 6m Star dream Led Starcloth RGB

If your design requires a specific rig plan and re-rigging, then there is will be an extra charge to pre-rig the lighting and change it back to the standard rig once your hire is completed.

BROADWAY

Other In House Lighting Stock :

4x Iris for Source 4 Zoom

6 x Iris for Source 4 Junior

4 x B- Size gobo holder for Source 4 Zoom

12 x M – size gobo holder for Source 4 Junior (all in current rig)

6 x Robert Juliat 1200w Fresnels

1 x Smoke Factory Smoke Machine

1 x Pani 1202 1200w Followspot

Preferred Supplier Lighting Stock Available to venue – (hire charges apply)

4 x Prolights Razor 440 Hybrid Moving Head

10 x Prolights Jade Hybrid Moving Head

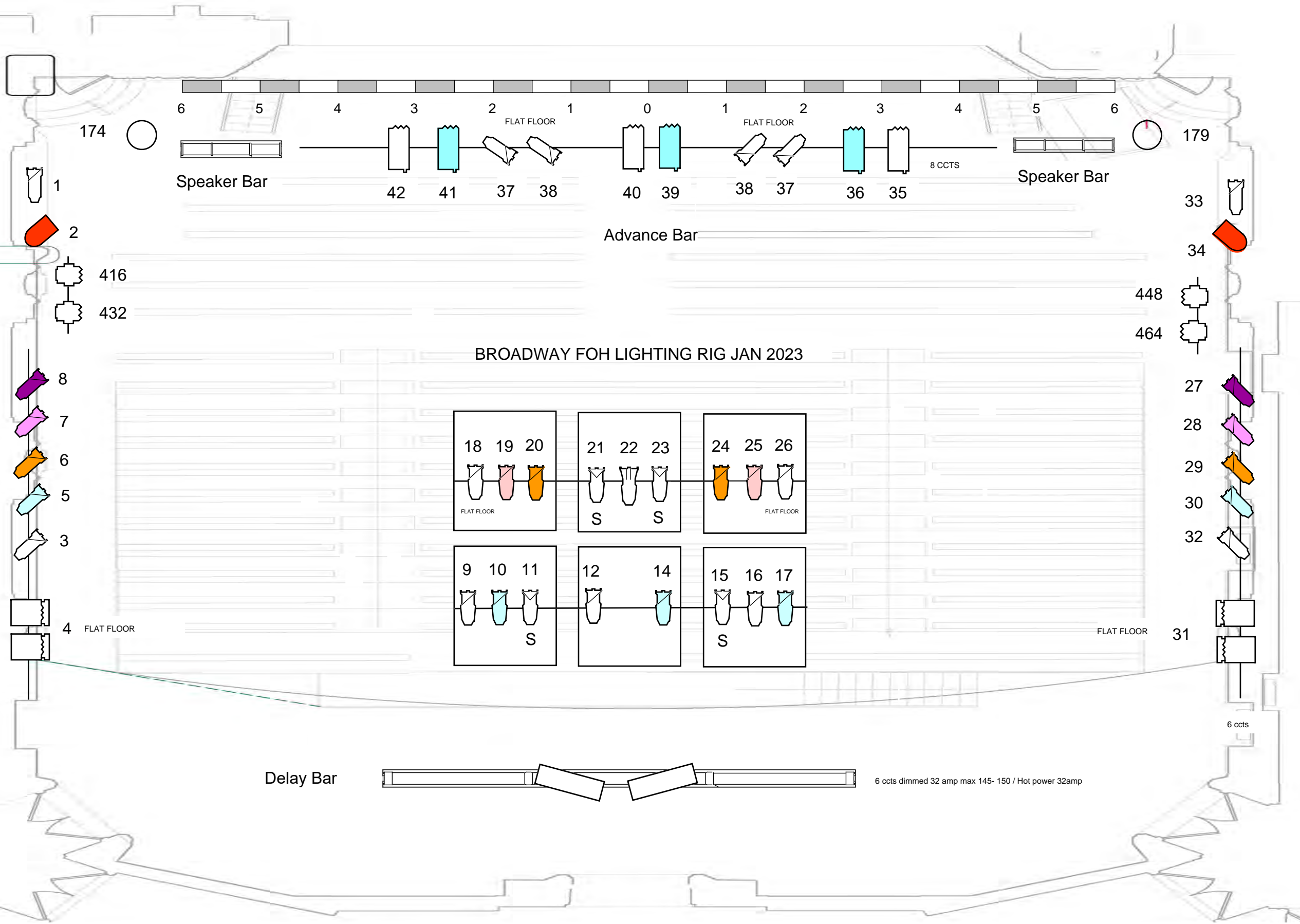
8 x Prolights Diamond 19 Wash Moving Head

6 x Showtec Phantom 3R Beams

8 x 100w Led Blinders

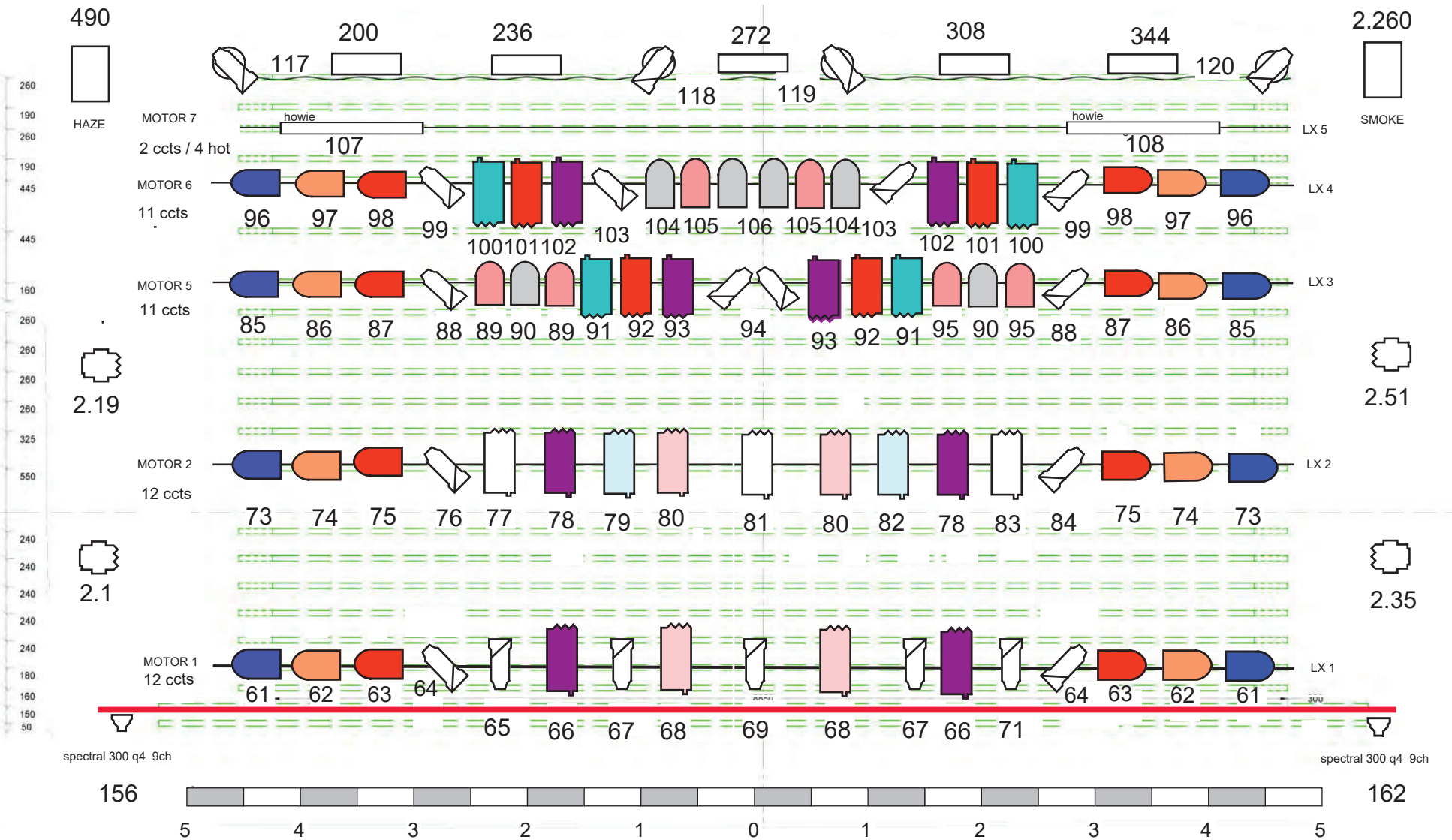
16 x Pixel Bar 12 Battens

Other Lighting equipment available on request



par 64	source 4 junior	source 4 25/50	source 4 19/30	1k fresnel	par 64 led rgb dim st	spectral 300 q4 9ch	smoke factory tour haze
howie battery	equinox power battery mk2 26ch	fusion zoom 120mk2 16ch					

Not To scale



BROADWAY STAGE LIGHTING RIG JAN 2023

BROADWAY

Sound Equipment :

Front of House system consists of 2 x Hangs L+R of Logic System Ethos CA System trimmed at around 10.5m above Auditorium Floor

Front of House Left Array - 1 x Logic System ND215 Bass Cabs 2000w - 40Hz – 150kHz (With assisted alignment)

4 x Logic System CA10 Compact fixed angle array 10 degree 100Hz – 20kHz (With assisted alignment)

2 x Logic System CA20 Compact fixed angle array 20 degree 100Hz – 20kHz (With assisted alignment)

Front of House Left Array - 1 x Logic System ND215 Bass Cabs 2000w - 40Hz – 150kHz (With assisted alignment)

4 x Logic System CA10 Compact fixed angle array 10 degree 100Hz – 20kHz (With assisted alignment)

2 x Logic System CA20 Compact fixed angle array 20 degree 100Hz – 20kHz (With assisted alignment)

Floor Mounted Subs - 2 x Logic System ND218 Sub Cabs (Centre Sub Array) 2500w 35Hz – 100kHz (With assisted alignment)

Front Fills Stereo - 2 x Logic System Notion 12 Full Range cabs 50Hz – 20kHz Mounted by stage access steps

Circle Fills Stereo - 2 x Logic System Notion 12 Full Range cabs 50Hz – 20kHz Wall mounted 20m from stage edge

Circle Fill Mono Sum - 2 x Logic System Notion 14 Full Range cabs 50Hz – 20kHz Flown from motor bar above circle

BROADWAY

Sound Equipment :

Front of House Pa Processing - 2 x Linea Research AC48 4 in 8 out Processor with FIR Filters Analog or AES inputs

Stage Monitoring - 4 x Logic System MLM15 Monitors 50Hz – 18kHz on 4 way mix

2 x Clair Bros AM12 Bi Amp Monitors – 2 way mix

Control Position Sound Equipment - 1 x Allen and Heath SQ6 48 input sound desk

2 x Allen and Heath Dlive C3500 with copper splits available for FOH / Monitors 64 way split*

*extra cost items

1 x Mini Mac running Qlab

4 x Sennheiser EWD Digital UHF ch38 Handheld Radio Mics -945 capsules.

2 x Denon CD Players

1 x 12 way Sound Tools cat rack to feed amps analog / AES

Stage Patch - 1 x Allen and Heath AR24/12 Stage Box 24 input 12 out

1 x Allen and Heath AB168 Stage Box 16 input 8 out

1 x 12 way Sound tools cat rack patchable on stage via 4 way audio over Ethernet boxes

BROADWAY

Sound Equipment :

Microphones :

4 x Sennheiser Rifle Mics

4 x SM58 Vocal Mics

2 X SM57

8 x AKG D5 Vocal Mics

1 x Audix D6

2 x AKG 214

1 x AKG C430

5 x AKG D40

Other mics available on request:

4 x AKG CK98 Rifle Mics *

6 x Crown PCC160*

4 x AKG Lectern Mics*

6 x AKG 391*

*Extra Charge Applies

In general we fully recommend using the in house system for all incoming hires as ground stacked systems cause sightline problems and do not cover the auditorium properly and there is no lift to the stage for access.

BROADWAY

Additional Sound Equipment :

Mic Stands: 10 x Tall Boom Stands
4 x Short Boom Stands
4 x Table Stands

Di Boxes: 5 x BSS Di Boxes

Mic Cable : A selection of 3 pin XLR in varying lengths

WE DO NOT CARRY ANY BACK LINE EQUIPMENT!

Additional Sound Equipment :

Additional equipment can be hired in such as IEMS wireless or hardwired / extra monitors / headset radio mics etc at reasonable rates

BROADWAY

Audio Visual Equipment :

The venue has a comprehensive ethernet and SDI patch but no house projection or AV equipment , this can be hired in from our preferred supplier , normally a 4.2m screen is flown above the stage either front projection (screen at rear of stage) or rear projection (screen mid stage) with Blackmagic control equipment .

Full conference equipment can be supplied including 65" screens on stands / laptops / comfort monitors etc .



BROADWAY

Studio Theatre :-

Broadway Studio is South East London's home for new work and emerging artists. It is an intimate Art Deco space which seats 90 people and is ideal for rehearsals, readings, performances, presentations, training sessions and more.

The studio theatre comprises of a small raked seating block and flat floor seating.

Studio Theatre Disabled Access :-

Disabled access is available from the main bar area and from the side of the building via a stair lift.

Studio Theatre Grid :-

The grid is a steel and Aluminium scaffold construction spread across four points.

The sockets terminate to 15A trailing leads, which are around 1 – 1.5M in length coming out from trunking running up and down the grid. (Please see the plan for layout)

The grid is approximately 4M from floor level.

BROADWAY

Studio Theatre Stage Information :-

The stage is a flat floor layout that melds into the front row of the audience. It has a very intimate feel to the space.

The stage is accessed via an open doorway upstage left which leads out to the dressing rooms. There is also a corridor from this doorway which can give you access to the auditorium entrance doors.

The floor is 18mm Ply board which is taped at the joints, this is over an original 1930s Parquet floor, therefore we do not allow people to screw into the flooring.

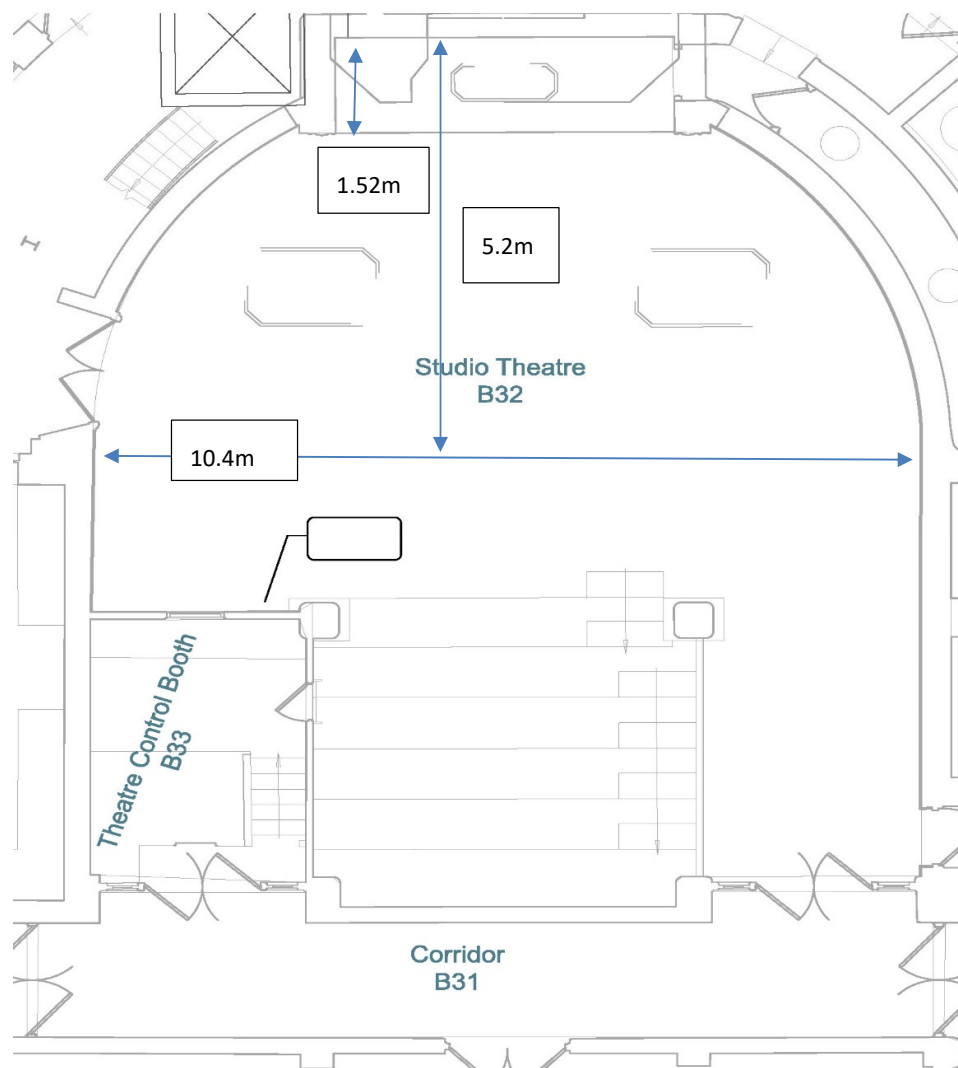
The stage has no wings as it is an open studio type space. It is wider downstage than up due to the walls curving round towards the rear. These walls have windows in, however Black Wool Surge (BWS) drapes have been hung to give a black box and block out any daylight.

The rear of the stage has a squared off area, which is framed by colonnades, however the roof of this curves down with the air handling grill built into the wall.

Haze can be used, however the alarms need to be isolated first by the house manager and clearance given. All doors must remain shut.

There are a set of fire doors downstage Right which must not be obstructed by set or stage equipment.

BROADWAY



BROADWAY

Studio Theatre Control Room :-

The control room is situated Downstage Right / Auditorium Left.

There are windows which open out into the auditorium for ease of hearing.

The control booth is quite small and cosy with two operators.

The lighting desk is situated to the left of the booth for ease of seeing visual cues, and also as it is next to the dimmer racks, so and mid show cross patching can be done without being in the way of the sound operator.

There is also a door which opens from the box into the auditorium, however this should not be used during performances as there is a small ladder to use to get in and out.

Studio Theatre Dressing Rooms :-

There are two communal dressing rooms for the studio theatre space which have an interlinking door.

They are accessible for the disabled via a ramp connecting to the studio space.

There is a communal toilet backstage for the cast to use.

The dressing rooms can hold around 6 people in each.

BROADWAY

Studio Theatre Lighting :-

The studio theatre has a standard house rig which is suitable for cabaret, Comedy, Music and plays.

it comprises of a 4 colour back light wash, a gobo wash, warm and cold 3 section area wash and a warm and cold cross light downstage.

The rig can be altered to suit your particular production, however it will require re-instating as per the standard rig upon completion of your tenancy. If this is not done, then a charge will be incurred by the hirer for someone to come in and reinstate the lighting rig.

Please see the attached plans for the studio lighting plan.

The rig comprises of:-

14x CCT Starlette 1000W fresnels with barndoors and colour frames (T19 Lamps)

16x ETC Source 4 Junior Zoom profiles 575W with colour frames (HPL575 Lamps)

(There is a small house stock of gobos and holders for these, but if you require specific gobos then these will need to be brought in by yourselves)

The lighting desk is an ETC Element 250DMX.

The dimmers are Zero 88 Beta 2, 6 channel dimmers with 15A outlets on the front.

There are 24 dimmers (4 racks).

BROADWAY

IMPORTANT-----

Each rack is fed from a 32A SPNE RCD, this in turn is fed from a 100A SPNE throw switch.

HOWEVER, the supply to the switch is only 60A SPNE!!! Do not put the whole rig upto full or you will take out the main breakers

The racks are individually fused per channel, spare fuses and a couple of spare lamps are stored in the control room.

There are 3 socapex's which go from the control room to the stage area, one for each boom and one for the FOH bar. These are labelled.

Studio Theatre Sound :-

The sound system is a basic system for speech and playback

It comprises of:-

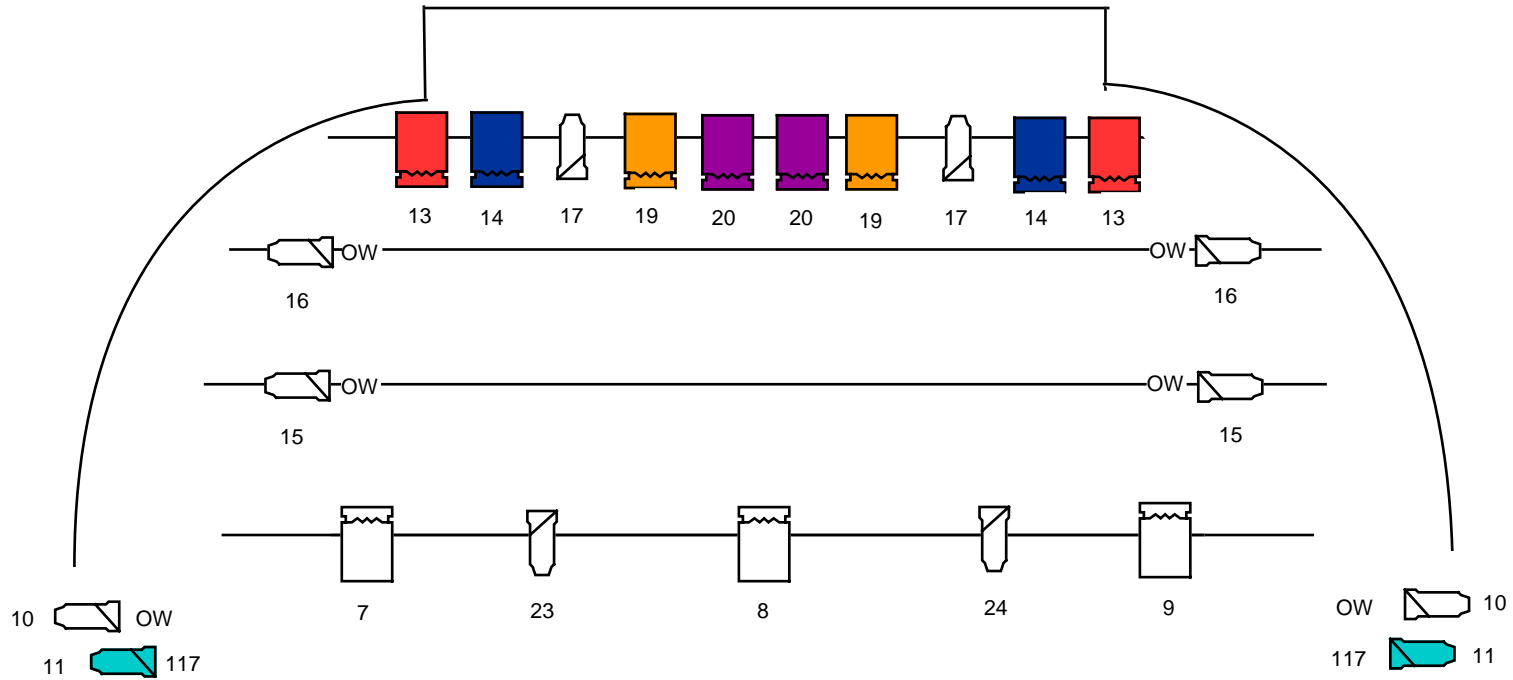
2 x Full range 12" speakers



1 x Yamaha LS932 Digital mixer

2 x Shure ch70 Handheld wireless mics

2 x Tall Boom Stands

Please note there is no in house laptop for playback



		Broadway Studio Theatre
source 4 junior	1k fresnel	

Studio Theatre

